

Installation Instructions:

Ensure within aperture is clean and free of debris, loose cement, and remove all dust from surfaces requiring installation.

Detail A- Single layer FB750 Intubatt detail suitable for detail references PS-001 to PS-003, 120 minutes integrity & 60 minutes insulation

1. Cut FB750 Intubatt as per detail references PS-001 to PS-003 and reference below.
2. Cut FP302 Intustrap in accordance with table below and pipe size.
3. Secure around pipe in line with proposed fire seal, ensuring the product is fully within the supporting product.
4. Form the product to tightly fit around the FP302 Intustrap, remembering to bond the FP302 Intustrap in position.
5. Apply FS702 Intumastic the FP302 Intustrap meets the product.
6. Repeat item 5 of the above to the opposite side of the wall.

Detail B- Double layer FB750 Intubatt detail suitable for detail references PS-001 to PS-003, 120 minutes integrity & 120 minutes insulation.

1. Follow detail A instructions and repeat to the opposite side of the wall.

Detail C & D - Annular opening up to 200mm as per detail reference PS-006, up to 120 minutes insulation & integrity, suitable for directly fitting into all wall and floor systems, direct fix to plasterboard requires a 0.7 gauge metal sleeve, can also be fitted within PS-001 to PS-004.

1. Follow items 1 to 3 of the above within detail A.
2. Fit 60mm depth of 64kg/m<sup>3</sup> rock mineral fibre into opening to form 3mm recess from face of substrate.
3. Fill recess with FS703 silicone / FS702 Intumastic until flush with substrate and trowel smooth.
4. Repeat to the opposite side of the wall. Floors require 60mm depth only and FS702 Intumastic / FS703 silicone to top face.

Detail E- FR230 Intucompound detail as per detail references PS-004, 120 minutes integrity & 120 minutes insulation.

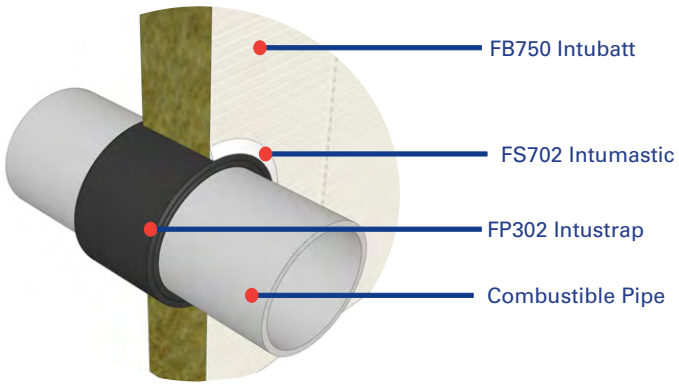
1. Follow detail references PS-004, to point of installing FR230 Intucompound
2. Follow items 1 to 3 of the above within detail A.
3. Follow detail reference PS-004, from point of installing FR230 Intucompound.

Detail F- FR230 Intucompound detail as per detail references PS-004, 240 minutes integrity & 240 minutes insulation.

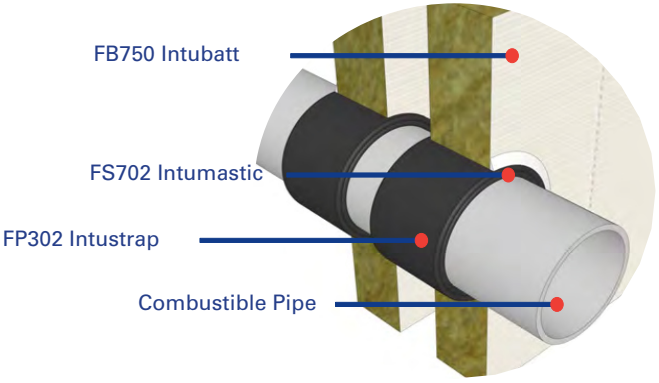
1. Follow detail references PS-004, to point of installing FR230 Intucompound.
2. Follow items 1 to 3 of the above within detail A and repeat for second row of FP302 Intustrap.
3. Follow detail reference PS-004, from point of installing FR230 Intucompound.

Note: FP302 Intustrap must always be fully within Nullifire product, if FP302 Intustrap extends past the product more than 10mm, this will constitute an incorrect installation.

Detail A



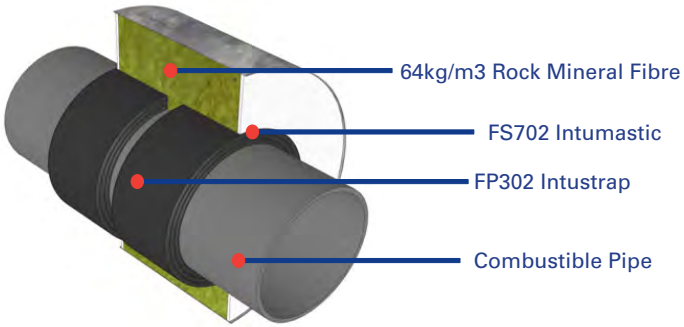
Detail B



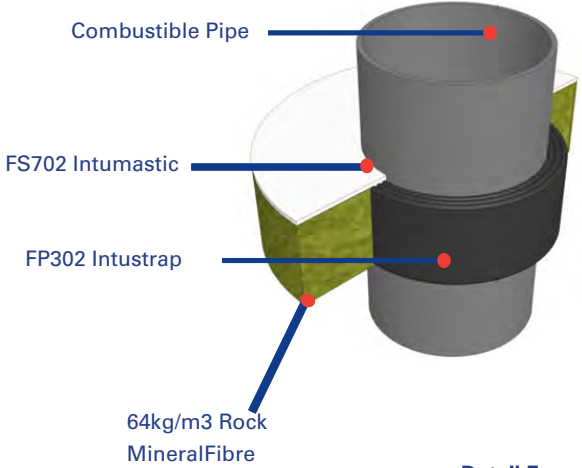
Main Detail



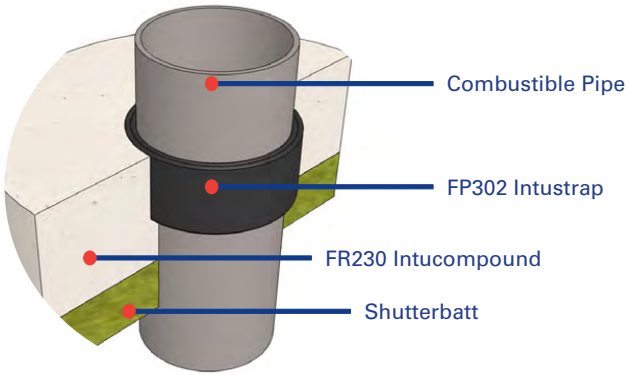
Detail C



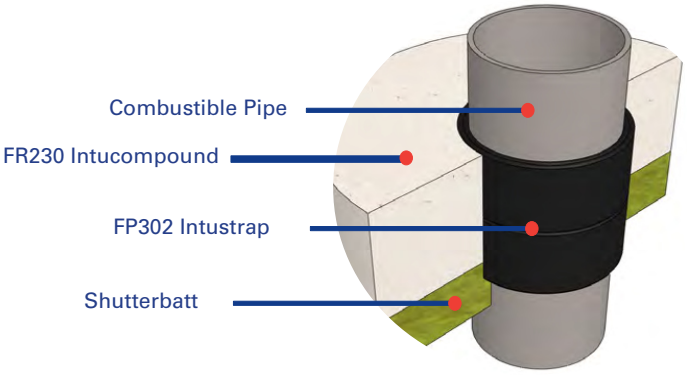
Detail D



Detail E



Detail F



Test Information:

**Test: BSEN 1366 / BS 476**

Products:

FP302 Intustrap - to be read in conjunction with details PS-001 to PS-004

Scenario:

Combustible penetrations passing through varying substrates in various orientations.

Penetrations:

Combustible Pipes

Void Size:

See related details as noted above.

Fire Resistance:

Tested up to 240 minutes

Movement Detail C & D only:

FS702 Intumastic: Up to  $\pm 15\%$   
FS703 silicone: Up to  $\pm 25\%$

Acoustic:

Consult suitably qualified acoustic engineer.

Nullifire details will only perform to the substrates performance capabilities. This applies to fire and acoustic.

Details may be applied to standard void seals, please see drawing sheet PS-001 to PS-005.

It is the responsibility of the purchaser to ensure suitability. If in doubt, please call a member of the technical team.

Drawing Title:

FP302 Intustrap to Combustible Penetration Wall & Floor

Drawing Reference No:

PS-007  
A3

Pipe Diameter	Number of FP302 Intustrap layers	Suitable in Wall FB750 Intubatt	Suitable in floor minimum FB750 Intubatt 70mm	Suitable in floor & wall soft-joint	Suitable in floor & wall FR230 Intucompound
Up to 55mm	1	✓	✓	✓	✓
Up to 82mm	2	✓	✓	✓	✓
Up to 110mm	3	✓	✓	✓	✓
Up to 160mm	4	x	✓	✓	✓

The published fire ratings have been achieved by following the instructions set out above. Use of alternative components or deviations from the instructions in anyway will remove Nullifire from any design liability. Nullifire will not accept responsibility for the consequences of the using our products in applications or purposes not authorised by Nullifire. Expert advice should be sought where such applications are contemplated. The information contained within this drawing is believed to be correct on the date of publication, and is based upon tested and certified solutions. The policy of Nullifire is one of constant improvement. Installers must therefore ensure that they are following the latest published drawings and instructions. Whilst we will endeavour to keep our publications up to date, the accuracy of the information contained within this drawing may be affected by pertinent changes in the law or regulatory requirements and alternations/amendments to the specification of Nullifire products.

For more information, please contact a member of our technical team on: firehelp@cpgeurope.com